

Established in 2012, **Topland** is a premier supplier of world-class assistive products and services. Our mission is to transform organizations and communities into fully accessible environments where every individual feels welcomed, included, and empowered.

From state-of-the-art hearing assistance and revolutionary mobility aids to sensory-friendly environments, our portfolio reflects an unwavering commitment to enhancing quality of life. By bridging the gap between ability and environment, Topland sets new benchmarks for accessibility, support, and universal design.

Our Core Capabilities

- **Supplying Assistive Products:** We deliver industry-leading solutions for hearing, visual, and mobility enhancement, alongside specialized tools for neurodiversity and hidden disabilities.
- **Comprehensive Assessment:** Our team conducts rigorous site inspections and scenario analysis in collaboration with global experts to propose the most effective, tailored solutions.
- **Expert Installation:** We provide end-to-end installation for our entire range, from versatile floating beach wheelchairs to sophisticated, high-tech hearing loop systems.
- **Dedicated Maintenance:** To ensure long-term reliability, we offer comprehensive maintenance contracts and extended warranties on our advanced assistive technology products.

Topland is proud to be a **Certified Social Enterprise by Ma'an**. This prestigious recognition highlights our dedication to creating measurable social impact and fostering a more inclusive future.



About Us

Topland is the leading supplier of assistive products and services in the Middle East

Assistive Products for Hearing Enhancement

Hearing Loop Systems: Hearing Loop Systems: Invisible Access, Universal Clarity.

Topland provides industry-leading Hearing Loop technology to create inclusive acoustic environments. These systems transmit sound directly to a user's hearing aid or cochlear implant, eliminating background noise and reverberation for crystal-clear audio.

What is a Hearing Loop?

A Hearing Loop is an assistive listening system that broadcasts an electromagnetic signal picked up by the "T-coil" in hearing devices. It transforms public spaces into accessible hubs, allowing those with hearing loss to engage fully without the need for additional handheld receivers.

Key Benefits:

- **Seamless Integration:** Discreetly installed under floors, in ceilings, or at counters.
- **User Privacy:** No need for users to ask for special equipment; they simply switch their device to the "T" setting.
- **Superior Clarity:** Cuts through background noise and echoes in large or busy spaces.
- **Compliance:** Helps organizations meet international accessibility standards.



| System Type | Application & Use Case |
|------------------|--|
| Counter Loops | Perfect for reception desks, ticket counters, and retail points to ensure clear 1-on-1 communication. |
| Portable Loops | Versatile, plug-and-play units for temporary meetings, interviews, or flexible workstations. |
| Elevator Loops | Specialized low-spill systems ensuring safety and information access within confined transit spaces. |
| Room / TV Loops | Tailored for hotel rooms or home environments to provide high-fidelity audio directly to the user. |
| Large Area Loops | Designed for auditoriums, theaters, and stadiums, covering expansive seating areas with uniform signal strength. |

Assistive Products for Hearing Enhancement

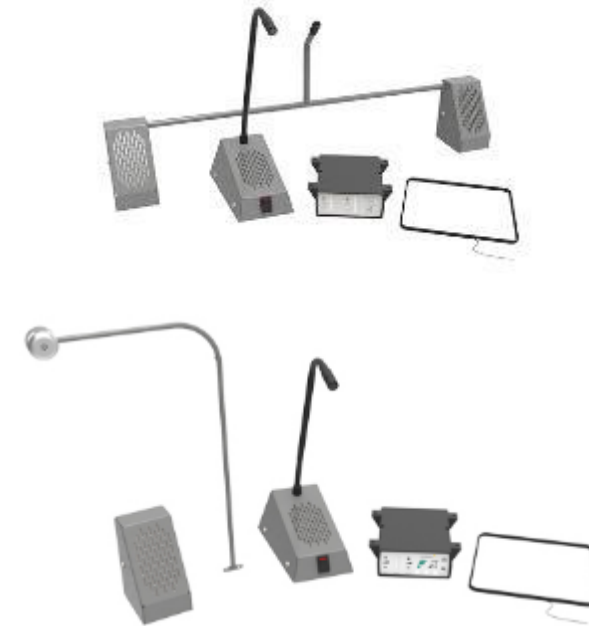
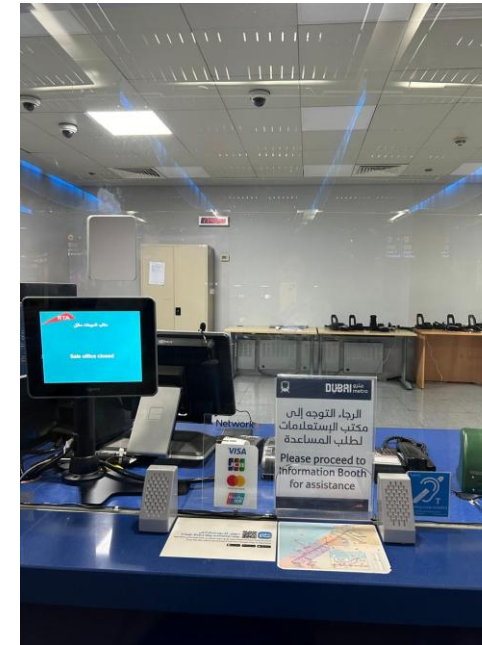
Window Intercom Systems with Integrated Hearing Loops.

Topland offers professional-grade Window Intercom Systems (Speech Transfer Systems) designed to facilitate seamless, high-quality communication through glass partitions. By integrating an induction hearing loop, we ensure that your service counters are accessible to all, including those with hearing loss.

What is a Window Intercom System? It is a dual-way communication solution comprising a staff unit (microphone and speaker) and a customer-facing unit. When integrated with a Hearing Loop, the system not only amplifies voice but also broadcasts the audio signal directly to a customer's hearing aid, bypassing the physical barrier of the glass and the ambient noise of the lobby.

Key Benefits:

- **Acoustic Clarity:** Eliminates the need for staff or customers to shout, ensuring clear dialogue even in noisy environments.
- **Privacy & Security:** Facilitates confidential conversations at banks or pharmacies without compromising the safety of the glass barrier.
- **Universal Accessibility:** Meeting international standards (like ADA and local accessibility codes) by providing a dedicated "T-coil" signal for hearing aid users.
- **Hygienic Interaction:** Maintains a physical seal between staff and the public while providing "natural" face-to-face communication.



Key Applications: Ticketing Counters | Bank Tellers & Money Exchange | Hospital Pharmacies | Consulates & Government Centers

Assistive Products for Hearing Enhancement

The World's First Non-Surgical Bone-Conduction Solution: Empowering those with up to 100% Conductive Hearing Loss.

A New Standard in Auditory Access: Traditionally, individuals with severe congenital conditions—such as Microtia, Anotia, or Atresia—where the physical ear is underdeveloped or missing, were limited to surgical interventions. The bone conduction device changes that landscape by offering a powerful, non-invasive alternative.

How the Technology Works? The bone conduction device utilizes the temporal bone to transmit sound, effectively bypassing the eardrums and middle ear. Vibrations are sent directly to the cochlea, which then transmits signals to the brain via the auditory nerve. This process allows for clear sound perception even in cases of complete conductive hearing loss or mixed hearing loss up to a 60 dBHL bone conduction threshold.

Advanced Features & Specifications:

- **Customizable Audio:** Programmable across 5 channels to match specific audiograms for optimized results.
- **Smart App Integration:** The WeConfig App allows for rapid configuration, including variable master gain, separate left/right ear programming, and 5-band tuning.
- **Seamless Connectivity:** Integrated Bluetooth 5.0 allows for simultaneous connection to two devices, including smartphones, laptops, and televisions.
- **Pro-Grade Processing:** Features a Qualcomm advanced sound processor for superior noise reduction and audio calibration.
- **Superior Hardware:** Includes dual microphones for stereo sound awareness and high-power transducers with a maximum gain of 80 dBHL.
- **User-Centric Design:** Ultra-Lightweight: Weighs only 33 grams for all-day comfort. Rapid Charging: Full USB-C charge in 45 minutes providing 8 hours of listening time. Durable: IPX6 rated for water and dust resistance. Intuitive: Features dedicated volume control buttons and multiple situational audio profiles. Acoustic Integrity: Engineered to eliminate feedback and "whistling" sounds common in traditional devices.



Assistive Products for Hearing Enhancement

Advanced Behind-The-Ear (BTE) Hearing Solutions: Precision Audio. Universal Design.

Topland's BTE series represents the pinnacle of "Assistive Innovation," offering tailored solutions for individuals ranging from mild to profound sensorineural (SN) hearing loss. Our devices combine sophisticated processing with user-centric features to restore clarity in any environment.



BTE Prime: The Ultimate Performance Flagship:

Engineered for individuals with Mild to Profound SN hearing loss (up to 125 dB).

- **Elite Processing:** Features 32-Channel Programmable technology with an advanced audiogram auto-tuning tool for a bespoke auditory experience.
- **Intelligent Charging:** High-tech portable charging case providing up to 8 full charges and integrated UV Sterilization for maximum hygiene.
- **Seamless Connectivity:** Equipped with Bluetooth Low Energy (LE) for direct, high-fidelity smartphone integration.
- **Next-Gen Audio Engine:** High-end processor dedicated to aggressive noise reduction and crystal-clear speech preservation.
- **User Empowerment:** Dedicated mobile app allows users to switch between environments and fine-tune audio profiles in real-time.
- **Durable Design:** An ultra-lightweight 9-gram chassis with IPX7-rated water resistance for total peace of mind.



BTE Optima: Versatile Clarity & Value

Optimized for individuals with Mild to Severe SN hearing loss (up to 80 dB).

- **Precision Tuning:** 8-Channel Programmable system utilizing advanced software with automated audiogram calibration.
- **Adaptive Listening:** Two specialized modes designed to enhance clarity across different acoustic environments.
- **Advanced Audio Processor:** High-end sound processing that minimizes background interference for focused listening.
- **Rapid Power:** High-efficiency rechargeable battery; a quick 45-minute charge delivers up to 10 hours of continuous playtime.
- **Streamlined Build:** A sleek, 9-gram lightweight design with IPX6-rated water and dust resistance.

Manufactured by People of Determination at Zayed Authority in Abu Dhabi, UAE

Assistive Products for Hearing Enhancement

Visual Alerting System for Hearing Impaired (Doorbell, Phone): Reliable Awareness. Wireless Freedom. Total Peace of Mind.

Visual Alerting Systems are designed specifically for individuals with hearing impairments, ensuring that critical signals—such as doorbells or telephone rings—are never missed. By converting acoustic sounds into high-visibility light flashes or tactile vibrations, we provide a seamless layer of safety and connectivity within the office, hotel or home.

How the System Works?

The system functions through a seamless wireless network of Transmitters and Receivers.

Transmitters: These units are placed at the sound source (e.g., next to the doorbell or phone) to pick up acoustic signals.

Receivers: Portable or fixed units that instantly reproduce the signal as a sequence of bright light flashes or powerful vibrating pulses.

Immediate Deployment: Our equipment is ready for use right out of the box, requiring no elaborate cabling or professional electrical installation.



Advanced RF Transmission Technology: the systems utilize high-performance Radio Frequency (RF) technology to ensure interference-free operation across any environment. **Wireless Reliability:** No physical wiring is required between transmitters and receivers, allowing for a clean and flexible setup. **Digital Coding:** Each system uses unique digital coding to prevent interference from other devices, making it possible to operate multiple separate systems within the same building without conflict. **Exceptional Range:** The system boasts an impressive transmission range of up to 200 meters, ensuring the coverage. **Secure Pairing:** Individual device pairing provides a vast number of transmission channels, virtually eliminating the possibility of signal crossover with neighboring systems.

Key Benefits:

- **Universal Accessibility:** Bridges the gap for those who cannot rely on acoustic alerts.
- **Discreet Awareness:** Flashing lights and vibrations provide a non-intrusive way to stay informed.
- **Scalable Solution:** Add as many transmitters (Doorbell, Phone, Smoke Alarm) or receivers as your space requires.

Assistive Products for Hearing Enhancement

Agrippa Acoustic Digital Vibrating Fire Alarm for Deaf and Hard of Hearing.

AGRIPPA



The Agrippa Vibrating Pillow Fire Alarm is a premier wireless, portable, and cost-effective solution designed to ensure the safety of individuals with hearing impairments. With its sleek, modern design, the Agrippa unit seamlessly complements any interior while providing life-saving alerts.

How It Works?

Agrippa is a battery-powered, wire-free device featuring a specialized pad attachment that is placed directly under a user's pillow. Using advanced "listen and learn" digital technology, the unit identifies the unique sound of a specific fire alarm. Upon activation, the system provides a multi-sensory alert:

- Tactile: The pillow pad vibrates powerfully to wake the user.
- Visual: High-intensity LED lights flash.
- Digital: An LCD screen clearly displays the word "FIRE".

Key Benefits & Features:

- Advanced Sound Recognition: Acoustically triggered using next-generation digital technology to distinguish fire alarms from background noise.
- Safety Standard Compliant: Features preset trigger levels of 70 dB and 75 dB, fully aligning with international fire safety standards.
- Total Portability: Compact and wire-free, the unit is powered by standard AA batteries and can be moved throughout a building as required with zero installation needed.
- Dual-Purpose Functionality: Includes an integrated alarm clock, allowing guests to use the device for daily wake-up calls.
- Regulatory Compliance: Enables hotels and accommodation providers to meet the rigorous accessibility requirements of the Equality Act.



Assistive Products for Mobility Enhancement

Mobi-mat®: The Gold Standard in Accessible Beach & Path Matting: Sustainable. Durable. Universally Accessible.

Mobi-mat® is a high-performance, roll-out matting system engineered to create seamless permanent or temporary pathways for individuals of all abilities. Whether for pedestrians, wheelchair users, or strollers, Mobi-mat® ensures that nature remains accessible to everyone without compromising the environment.

Engineered for Comfort and Safety

- **Barefoot Friendly:** The specialized surface remains cool even on hot, sunny days, ensuring comfort for barefoot users.
- **Safe Edging:** Features the industry's safest edges that require no secondary finishing, eliminating the risk of injury to hands or feet during use or installation.
- **High Visibility:** Available in a vibrant Blue to provide a high-contrast route for individuals with visual impairments, or a Golden hue that blends effortlessly into sandy landscapes.
- **Low Maintenance:** The unique weave does not retain sand within its surface and is resistant to both UV and extreme weather conditions ranging from -40°C to +80°C.

Eco-Friendly Innovation. As part of Topland's commitment to "Assistive Innovation," Mobi-mat® is as kind to the planet as it is to its users:

- **Recycled Materials:** Manufactured using 100% recycled polyester fibers.
- **Fully Recyclable:** The matting itself is entirely recyclable, significantly reducing its environmental footprint.
- **Durability:** The non-woven polyester material is designed to resist wear and tear, providing a long-lasting solution for high-traffic areas.
- **Simple Deployment & Customization:** Designed for quick setup and removal with no specialized tools required. Available in various widths and lengths; mats can be easily connected to create extended pathways of any distance.



Assistive Products for Mobility Enhancement

Mobi-chair®: The Ultimate Floating Beach Wheelchair: Seamless Access from Sand to Sea.

The Mobi-chair® is a high-performance floating wheelchair designed to provide individuals of all abilities with dignified access to soft terrains and water environments. Whether at the beach, lake, waterpark, or pool, this innovative chair ensures that restricted mobility is never a barrier to enjoying the water.

Engineered for Aquatic Adventure

- Superior Buoyancy: Equipped with specialized floating armrests and three oversized wheels, the Mobi-chair® allows users to float safely and comfortably in the water.
- Adjustable Comfort: Features three distinct seating positions to accommodate the user's preference and support needs.
- Safety First: Each unit comes standard with a high-quality safety belt for secure transit across uneven terrains and while in the water.

User-Centric Design & Portability

- Tool-Free Assembly: The Mobi-chair® is composed of just six primary parts: the frame, two armrests, and three large wheels
- Rapid Deployment: The entire unit can be assembled or disassembled in less than one minute without the need for any tools.
- Efficient Storage: Its modular 6-part design allows for compact storage and easy transport in standard vehicles.
- Quick Maintenance: Engineered with durable, water-resistant materials that allow for fast cleaning and long-term reliability.

Product Features:

- H x L x W: 127 x 152 x 107 cm
- Weight: 30kg
- Max Weight Capacity: 135 kg
- Min Weight Capacity: 25 kg



The Mobi-chair® is the ideal solution for Beach & Resort Operators: Enhancing guest inclusivity and satisfaction. Public Parks & Waterparks: Meeting universal design standards for outdoor recreation. Private Users: Providing elderly and those with special needs freedom to enjoy the ocean with family.

Assistive Products for Mobility Enhancement

SEATRAC: Independent Sea Access for All: Unassisted Mobility. Proven Autonomy. Total Inclusion.

SEATRAC is the world's first automated transformative assistive solution designed to provide individuals with mobility restrictions—including people with disabilities and the elderly—with the freedom to enter the sea completely unassisted. By bridging the gap between the shore and the water, SEATRAC promotes independence and wellness, ensuring that the ocean is accessible to every member of society.



Autonomous Sea Access

Suitable for beach front hotels, beach clubs, public beaches and parks



Remote Controlled

SEATRAC operates with a remote control



Environment Friendly

Use of renewable energy sources and no permanent alteration to environment



Self-diagnosis System

Long distance troubleshooting



Adapted to Beaches

Length, width and height customizable according to the customer's and beach's needs

Original SEATRAC Mobility System: Installed



SEATRAC Mover: Mobile



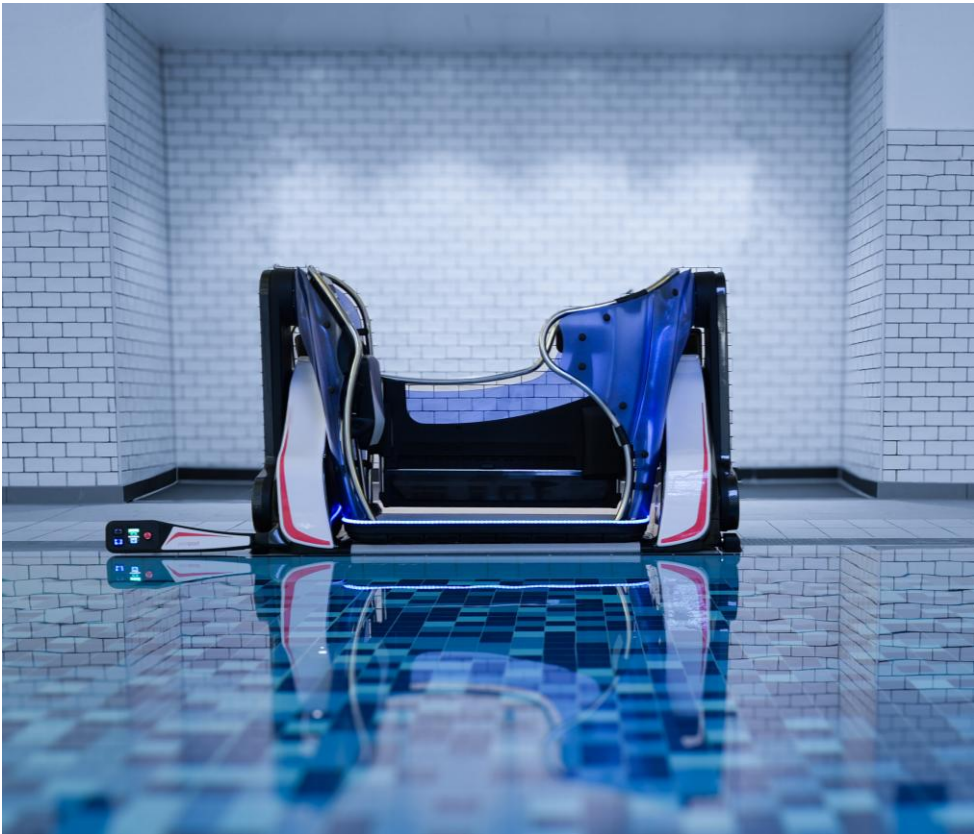
Benefits for Families and Caretakers

- Challenge-Free Beach Days: Caretakers and families can enjoy their time at the beach without the physical strain or logistical stress of managing manual sea entries.
- Social Integration: By fostering an environment where everyone can participate equally, SEATRAC promotes the true integration and inclusion of all community members.
- Universal Reliability: An innovative solution that adds significant value to public beaches, private resorts, and coastal municipalities.

Assistive Products for Mobility Enhancement

Mobile Poolpod Lift System

The Poolpod 3.0 sets a new global standard for inclusive aquatic environments, providing dignified and independent pool access for swimmers with a wide range of mobility requirements. Engineered to replace cumbersome traditional ladders, this system is a game-changer for wheelchair users and those with reduced mobility. The latest iteration, Poolpod 3.0, has been refined to offer an even smoother, safer, and more intuitive user experience. By integrating cutting-edge technology with user-centric design, it introduces several industry-leading enhancements—exclusive to Poolpod—that redefine the expectations for modern pool accessibility.



- **Durability:** Constructed with high-quality materials rigorously tested for long-term use in pool environments.
- **Compact & Spacious Design:** Features foldable seats, allowing a wheelchair user and a companion (seated or standing) to enter the water together.
- **Enhanced Submersion:** Offers a submersion depth of 1.4 meters, compatible with a variety of pool designs, including skimmer and freeboard pools.
- **Improved Mobility:** Integrated transport wheels allow secure movement around the poolside, with manual control for pool staff.
- **Accessible Controls:** Tactile buttons, large display screens, and audio output provide support for users with visual or hearing impairments.
- **Safety Features:** Includes collision sensors on the cradle and doors, as well as a manual winding system for quick emergency operation.
- **Dual Battery System:** Extended battery life with level indicators and Wi-Fi connectivity for remote diagnostics and support.
- Updated, user-friendly controls, additional grab handles, fold-down seats, and the option for a caregiver to accompany the user into the water. The improved ergonomics give users precise control over their ascent, descent, and submersion depth.

Assistive Products for Mobility Enhancement

Aqua-Active Wheelchair

- Ideal for active users, with a stainless-steel frame, flip-up armrests, and a self-propelled option.
- Maximum user weight: 100 kg.
- Ideal for pool and wet leisure activities.



Aqua-Tilt Wheelchair

- Suited for higher dependency users, featuring a 30-degree tilt, pediatric support, and adjustable headrests.
- Maximum user weight: 125 kg.
- For swimming pool and showering use.



Assistive Products for Mobility Enhancement

Fixed Pool Lift System: Installed Option



- IPXo6 mobile push-button panel with spiral cable
- Up – down controls
- Folding seat to reduce the overall dimensions of the lift
- Removable telescopic leg support
- 2-point ventral safety belt
- Emergency stop button
- Removable battery for charging
- External battery charger
- Average autonomy: 50 working cycles
- Maximum capacity: 140 kg
- Maximum travel: 1350 mm
- Depth of seat inside the water: 850 mm
- Time of lowering – lifting with weight into water: 45 sec
- Weight of the lift: 60 kg
- Battery: 24 V

Portable Pool Lift System: Mobile Option



- Equipped with highly shock-absorbent rubber wheels and various types of restraint belts, footrests and headrests.
- Emergency manual pump for use in case of power failure
- Maximum capacity: 120 kg
- Maximum travel: 1520 mm
- Depth of seat inside the water: 500 mm
- Time of lowering – lifting with weight into water: 15 sec
- Weight of the lift: 120 kg
- Battery: 24 V

The Pool Lifts are specially designed for safe transfer of elderly people and people with restricted mobility to the water. The Pool Lifts are suitable for use in outdoor or indoor swimming pools at the Hotels, Schools, at Hydrotherapy (water therapy) pools, at Spa-Thermal Centers and Sports Facilities. The Pool Lifts are easily assembled providing easy pool access without the need for assistance or companions.

Assistive Products for Mobility Enhancement

Evacuation Solutions

Evacuation chairs are essential to safely move guests with reduced mobility during emergencies when elevators cannot be used. They allow staff to quickly and efficiently evacuate individuals downstairs and through complex building layouts. By ensuring every person can be evacuated, they significantly improve building safety, compliance, and emergency readiness.

Where to Use Them:

- Multi-storey buildings
- Areas with stair access only
- Special Assistance Desks
- Recreation and Sports Facilities

Evacuation chairs must be placed on each floor staircase, next to Emergency Exits.



| SAFE WORKING LOAD | DIMENSIONS FOLDED | DIMENSIONS OPEN |
|-------------------|------------------------------------|------------------------------------|
| 182 Kgs | 1040mm (H) x 500mm (W) x 300mm (D) | 1470mm (H) x 500mm (W) x 920mm (D) |

Assistive Products for Mobility Enhancement

Self-Service Wheelchair Charging Stations

Empowering people with disabilities with greater independence and social freedom, our Self-Service Wheelchair Charging Stations are designed to eliminate the anxiety of battery depletion. By providing a reliable, 24/7 power infrastructure, these stations ensure that orthopedic disabled users can navigate the city with total confidence. Blending seamlessly into the urban landscape, our stations act as modern, stylish city furniture that serves a vital humanitarian purpose: ensuring no one is ever left stranded.



Engineering Excellence & Design

- **Rapid Charging:** Equipped with a programmable Smart Charging Kit, delivering reliable power up to 3x faster than standard chargers.
- **Industrial Durability:** Features a sealed, grounded steel housing and Amphenol charge connectors—renowned for their resistance to deformation and heavy outdoor use.
- **Versatile Media:** Available in Mono or Dual-screen configurations, serving as a dual-purpose hub for both charging and communication.
- **Intelligent Infrastructure:** Remotely manageable system with online software updates, allowing municipalities to push announcements and monitor status in real-time.

Key Benefits

- **24/7 Community Support:** Provides an uninterrupted, free-to-use service that enhances the daily lives of residents.
- **Increased Public Trust:** Demonstrates a visible commitment to accessibility, removing the "range anxiety" associated with power wheelchairs.
- **Social Awareness:** Acts as a landmark for social responsibility, blending technological innovation with inclusive city planning.
- **Universal Compatibility:** Functional charging kits designed to be compatible with every major power wheelchair brand.

Assistive Products for Mobility Enhancement

Changing Places: Restoring Dignity, Enabling Freedom.

For nearly 20% of the population, a standard accessible toilet is simply not enough. Individuals with profound disabilities, cerebral palsy, or brain injuries often face a heartbreaking choice: stay confined to their homes or be changed on a public restroom floor. Changing Places toilets eliminate this barrier, providing the space and specialized equipment necessary for safety, hygiene, and equality.

Why Standard Disabled Toilets Aren't Enough: **Space Constraints:** Standard WCs cannot accommodate large power wheelchairs or multiple carers. **Lack of Equipment:** They lack the essential hoists and adult-sized benches required for those who cannot toilet independently. **Limited Independence:** Without these facilities, families are excluded from the everyday activities most take for granted.

Versatile Solutions for Every Environment

Whether upgrading an existing building or adding facilities to an outdoor public space, we provide two primary configurations:

| Internal Installed Systems | External Modular Pods |
|---|---|
| Seamless Integration: Tailored to fit within your building's existing footprint. | Plug-and-Play: Self-contained, weather-proof units that can be placed anywhere. |
| Architectural Harmony: Custom finishes to match your interior design. | Rapid Deployment: Minimal on-site disruption; ideal for parks, beaches, and car parks. |
| Cost-Effective: Utilizes existing plumbing and electrical infrastructure. | High Visibility: Clearly identifiable "Inclusive Zone" for the community. |



Assistive Products for Mobility Enhancement

EZRide+: Instant Power. Infinite Freedom.

The EZRide+ is the next generation of wheelchair power-assist technology. This innovative attachment seamlessly integrates with most manual wheelchairs, instantly transforming them into high-performance, independently driven units. Designed for users who demand both the portability of a manual chair and the capability of a motorized one, the EZRide+ empowers you to navigate your world with newfound speed, confidence, and agility.

Versatile Mobility for Every Environment. Whether touring expansive exhibition halls, navigating art galleries, or exploring rugged outdoor paths, the EZRide+ is engineered for peak performance. Its class-leading 360-degree turning radius makes maneuvering through tight indoor spaces effortless, while its robust motor handles outdoor transitions with ease.

Performance & Efficiency

- **Rapid Transformation:** The quick-connect mechanism allows for effortless attachment and detachment, giving users the flexibility to switch between manual and power modes in seconds.
- **Extended Range:** Travel 19–24 km on a single charge—ideal for full-day excursions or professional events.
- **Fast Charging:** Return to full power in just 4 hours (0% to 100% charge).
- **Ultra-Compact Design:** When detached, the EZRide+ is compact enough for easy storage in vehicle trunks or tight closets.



Accessibility Products for Mobility Enhancement

Intelligent Fire Door Holders: Safety Meets Accessibility: Compliant. Reliable. Fail-Safe.

In high-traffic environments like hospitals, schools, and hotels, wedging fire doors open is illegal and life-threatening. Our range of magnetic door holders ensures that fire doors remain open for ease of movement and disabled access (Equality Act 2010) but close instantly upon fire alarm activation to prevent the spread of smoke and flames.

Choose the Right Integration for Your Facility

| Feature | Hardwired Systems | Radio (Wireless) Systems | Acoustic (Plug-and-Play) |
|---------------|---|--|--|
| Connection | Physically wired to the fire panel. | Wireless radio signals to a central controller. | "Listens" for the specific sound of the alarm. |
| Best For | New builds or major renovations. | Heritage buildings or complex layouts. | Retrofitting with zero disruption to décor. |
| Compliance | Category A (BS7273-4) | Category A (BS7273-4) | Category B (BS7273-4) |
| Key Advantage | Fail-safe: Doors close even during power failure. | No cabling required; does not alter building infrastructure. | Agrippa Technology: Learns your specific alarm to prevent false releases. |
| Installation | Requires an electrical engineer. | Wired controller; wireless holders. | Easy DIY: Easy to install and "teach" the unit. |



Assistive Products for Visual Enhancement

NaviLens Smart Codes

NaviLens has been designed specifically to enable blind and partially sighted people to be able to access and locate information and interact with the environment around them. The users can download free NaviLens App, scan the codes with the mobile camera and get necessary guidance and access to information and content. NaviLens supports 42 languages.



Amazing Features of NaviLens Smart Codes:



Scannable and Readable from a long distance of upto 50 m



Reading codes with NaviLens is almost instantaneous: 0.03 seconds



Wide scanning and reading angle of upto 160°



Reading in all light conditions



Accuracy and Orientation: accurate distance and guidance information



No need to focus on the code or know where they are located, the codes are readable at 80° angle



Assistive Products for Visual Enhancement

Tactile Guidance Systems: Ensuring Universal Accessibility

Empower all visitors to navigate your space with confidence and independence. Our Tactile Studs and Strips provide essential floor-level cues for the blind and visually impaired, turning complex environments into predictable paths.

Core Components

Our system utilizes two distinct shapes to communicate vital navigational information through "underfoot" sensory feedback.

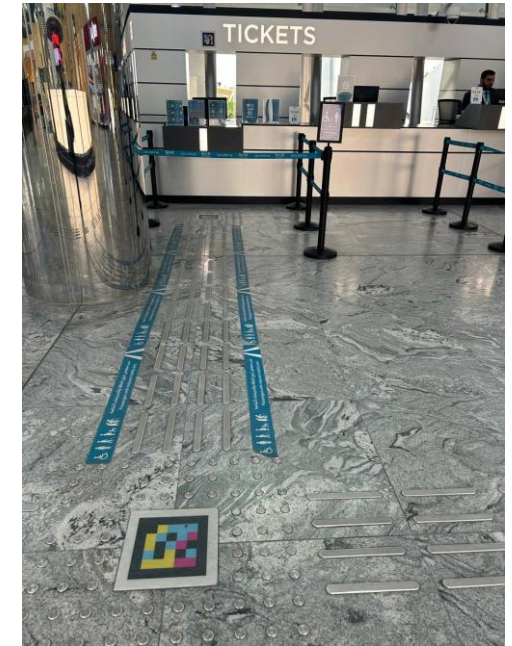
- Tactile Strips (Directional Indicators): Linear markers designed to define a safe path of travel. These guide users along straight corridors and transition areas.
- Tactile Studs (Warning Indicators): Circular markers placed at critical decision points or hazards. These signal a change in direction or a change in floor level.



Key Applications

Tactile indicators are a safety requirement for high-traffic public spaces. Our Warning Studs are specifically designed for:

- Stairways: Top and bottom landings to signal elevation change.
- Vertical Transport: Thresholds for elevators and escalators.
- Intersections: Points where two paths meet or direction changes.
- Ramps: Warning cues for gradient transitions.



Assistive Products for Visual Enhancement

WeWALK Smart Features for Modern Navigation

WeWALK elevates the standard white cane by integrating high-tech sensors and smartphone connectivity into an intuitive, ergonomic handle.

- **Above-Ground Obstacle Detection:** Using a front-mounted ultrasonic sensor, WeWALK detects hazards that traditional canes miss—such as low-hanging branches, signs, or barriers—and warns the user via discreet vibration feedback.
- **Smartphone Integration:** Connects via Bluetooth to the WeWALK App (iOS & Android). Users can manage navigation, exploration, and public transport services directly from the cane handle.
- **Evolutionary Platform:** As an open software platform, WeWALK "grows" with the user. Regular updates introduce new app integrations and mobility services, ensuring the technology never becomes obsolete.
- **Ergonomic & Universal Design:** WeWALK was engineered to feel natural. It attaches as a smart handle to any standard long cane, maintaining the classic tactile feedback of a white cane while adding a layer of digital intelligence.

| Feature | Benefit |
|------------------------------------|---|
| Intuitive Interface | Easy-to-use controls designed specifically for the visually impaired community. |
| Connected Mobility | Access real-time public transport data and turn-by-turn navigation. |
| Affordable & Accessible | A high-tech solution designed to be inclusive and globally available. |



Assistive Products for Visual Enhancement

The Dot Pad X - Next-Generation Assistive Device for Visually Impaired

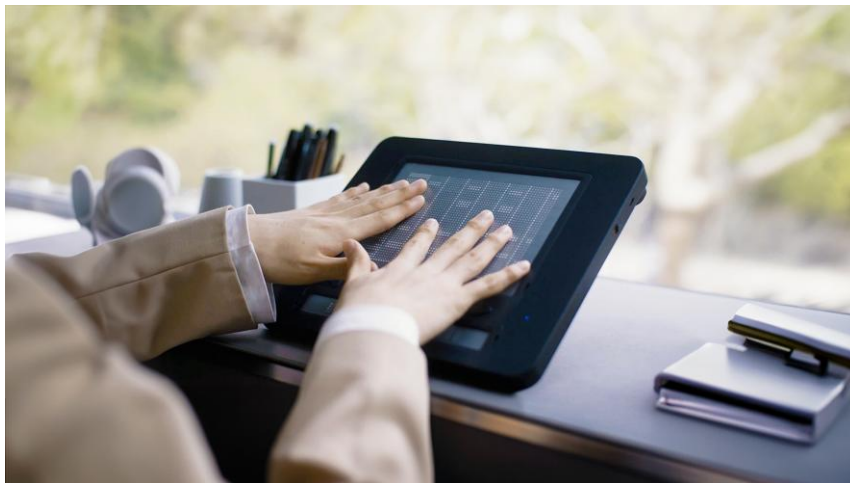
The Dot Pad X is the world's first device to seamlessly combine tactile graphics and multi-line braille in one powerful, portable display. Dot Pad X transforms how you learn, work, and explore by making text, images, maps, and even complex math equations fully accessible at your fingertips.

The Dot Pad X is an advanced assistive technology solution that integrates tactile graphics and multi-line braille into a single, highly versatile display.

It features a primary 300-cell tactile graphics and multiline Braille display and a secondary single line 20-cell Braille display, allowing for simultaneous perception of images, shapes, and text.

Designed for users who are visually impaired and blind, the Dot Pad X facilitates the creation, editing, saving, and sharing of rich, multi-sensory content, significantly enhancing learning, creativity, and reading.

With AI-powered image processing, seamless integration with iOS, iPadOS, and Windows (including JAWS support), and a lightweight design that fits in your backpack, the Dot Pad X opens up endless opportunities for education, creativity, independence, and entertainment. Whether you're navigating a tactile map, studying STEM subjects, or enjoying comics and art, the Dot Pad X brings the world to life through touch.



Assistive Products for Visual Enhancement

Dot Kiosk - The World's First Barrier-Free Kiosk. Empowering 100% of your customers with patented tactile technology.

Dot Kiosk is the world's first truly barrier-free terminal. By combining proprietary tactile technology with robotic hardware, we ensure that every person—regardless of physical ability—can access services with dignity and speed.

Core Product Features:

- **Tactile Dot Pad:** A world-first 300-cell display that converts visual data into Braille and tactile graphics, allowing users to "feel" maps and icons.
- **Automatic & Manual Height Adjustment:** Smart sensors detect user height (including children and wheelchair users) and move the screen to the perfect reach.
- **Sign Language:** Sign language video support for the hearing impaired.
- **Audio guidance:** Voice guidance and explanations, multiple language support.
- **Inclusive UI/UX:** One-touch switching for high-contrast modes, large text, and voice-guided navigation.
- **Applications Across Industry Sectors:** **Public Transit:** Tactile wayfinding maps and ticket sales in subway stations and airports. **Government:** Barrier-free document processing and queue management for all visitors. **Retail & F&B:** Self-ordering menus with voice guidance and accessible payment terminals. **Healthcare:** Private patient check-in and digital form filling for the visually impaired. **Museums:** Tactile art displays that allow visitors to "feel" history and artifacts.



Assistive Products for Visual Enhancement

Nemonic Dot: The World's First AI-Powered Braille Label Printer

The Nemonic Dot is a revolutionary, portable Braille labeling solution designed to bridge the gap between information and accessibility. By utilizing Voice-to-Braille AI technology, it allows anyone—regardless of their Braille knowledge—to create high-quality, tactile labels instantly. Whether in a pharmacy, a metro station, or a home, the Nemonic Dot ensures that vital information is accessible to everyone.

Key Product Features:

- **AI Voice-to-Braille Conversion:** Users can simply speak into the companion app. The AI instantly translates speech (or typed text) into accurate Braille in over 100 languages.
- **Proprietary Pressing Mechanism:** Produces consistent 0.6mm high dots (meeting global standards), providing superior tactile readability compared to traditional portable embossers.
- **Specialized Metal Tape Support:** The first portable device capable of embossing on metal labels, offering extreme durability for outdoor public infrastructure like handrails, bus stops, and signage.
- **Eyes-Free Design:** The printer itself is designed with tactile textures and a simple interface, allowing visually impaired users to operate it with full independence.
- **Compact & Portable:** A palm-sized, battery-powered device (approx. 4.5" square) that connects via Bluetooth, eliminating the need for complex wired setups.



| Sector | Application |
|---------------------|---|
| Healthcare & Pharma | Labeling custom prescriptions, dosage timings, and expiration dates. |
| Public Transport | On-demand Braille signage for temporary facilities, kiosks, and handrails. |
| Education | Creating tactile study aids and labeling classroom equipment instantly. |
| Corporate/Retail | Labeling office doors, elevator buttons, switches, and retail shelf prices. |
| Personal Use | Distinguishing household items (spices, medicines, toiletries) by touch. |



Assistive Products for Visual Enhancement

Empowering Vision: Advanced Reading & Magnification Solutions

Video Magnifiers: Electronic video magnifiers offer significant advantages over traditional magnifying glasses and are simple to use. By replacing a glass lens with camera and screen technology, they are able to provide variable magnification, superior image quality and a range of enhanced, high contrast, viewing modes for reading text. Improved image clarity also enables the magnifier to be viewed at a more comfortable distance, improving posture and comfort while reading and writing, making reading easier, faster and more enjoyable.

Reading Devices: Our standalone reading machines photograph any printed text and start reading it aloud within seconds, with the push of a button. They are user-friendly and suitable for people of all ages and abilities who are partially sighted or completely blind. They also allow the document to be magnified (with the optional Feature Pack) through 6 viewing modes.

Readit Connectable Reading Machines: Designed for blind and partially sighted computer users, these portable systems connect to your PC & both magnify & read documents out loud via the Readit software. The Scholar HD is also capable of magnifying and reading distant objects.

CoaSt: An education / business focussed distance camera solution with both Windows and iPad support (Mac and Android support to follow). Weighing in at just 350g, this lightweight device boasts a 4 MP camera with an impressive 10x optical zoom. It comes with an adjustable height stand. It gives business professionals and students unparalleled access to all the content they require.



Assistive Products for Visual Enhancement

Specialized Keyboards

The Clevy Keyboards are a durable, mechanical keyboards designed for children and individuals with motor or visual impairments, offering accessibility, educational support, and ease of use.

The Clevy Keyboards are specifically designed to support children, early learners, and people with special needs, including those with motor impairments or low vision. It combines mechanical key switches with a durable construction, making it suitable for classroom use and long-term daily use. The keyboard emphasizes digital accessibility, helping users learn to type, read, and navigate computers confidently.

Key Features

- **Tri-Mode Connectivity:** The latest version, Clevy Keyboard 3, supports USB, Bluetooth, and SimplyWorks RF connectivity, allowing both wired and wireless use.
- **Large, Colorful Keys:** Keys are big, concave, and color-coded, making them easier to see and press, which reduces typing errors and supports small hands.
- **High-Contrast Options:** Versions like the Clevy Contrast Keyboard enhance visibility for users with low vision.
- **Durability:** Constructed with a steel plate and high-quality ALPS switches, the keyboard is rated for over 50 million keystrokes and is spill-resistant.
- **Simplified Layout:** Contains 67 keys with fewer function keys, focusing on essential keys to reduce complexity and improve hand positioning.
- **Accessibility Features:** Includes a Key Repeat switch to control repeated characters, and optional silicone covers or keyguards for additional guidance and protection.

The High-Contrast Keyboard for Low Vision.



A Strong Mechanical Keyboard that Assists.



Assistive Products for Neurodiversity Support

The Autism Reality Experience: Walking in Their Shoes

Understanding the sensory world of someone on the autism spectrum is a profound challenge for those not on the spectrum themselves. The Autism Reality Experience bridges this gap, moving beyond theory to provide a high-tech, tangible intervention that transforms how we support, teach, and care for autistic individuals.



Developed by Training 2 CARE UK in direct collaboration with autistic people, this experience is the most "true-to-life" simulation currently available. It is designed to dismantle stereotypes and break down the barriers created by a lack of perspective.

- Lived Experience: Gain a first-hand understanding of the daily sensory challenges faced by those on the spectrum.
- Actionable Awareness: Recognize how environmental factors and a lack of external knowledge contribute to the difficulties autistic individuals face.
- Evidence-Based: Already commissioned and trusted by the NHS, emergency services (Police/Ambulance), universities, and care providers across the UK.

Who Is This For?

The Autism Reality Experience is a vital tool for any individual or organization committed to inclusive excellence:

- Education: Teachers and SEN coordinators seeking to better meet student needs.
- Healthcare: NHS staff and care providers looking to improve patient outcomes.
- Public Services: Police and first responders gaining critical de-escalation insights.
- Customer facing services: Airports, shopping malls, hotels, entertainment venues.
- Families: Parents and caregivers wanting to deepen their connection and understanding.

Impact & Recognition: "There is no better way of gaining awareness than walking in the shoes of a person on the autism spectrum. This experience is changing the landscape of autism support by fostering genuine empathy."

Assistive Products for Neurodiversity Enhancement

Thoughtfully designed Calmr products combine innovation and comfort to support wellbeing, reduce stress, and create a sense of calm in everyday moments.



The Cape - The Heavyweight Hug: for at home, at work, at school: A weighted, wearable pause button for your nervous system. The Calmr Cape is a hug when you need one: the ultimate sensory support for stressed minds, exhausted bodies and dysregulated nervous systems. With the impact of a weighted blanket, but in a wearable form, for work, at home or for grounding yourself for yoga/Pilates.

Within one minute of wearing a Calmr Cape, the thousands of microbeads activate pressure receptors in your skin. That signal tells your brain - you're safe. Touch is the oldest calming tool we have: it triggers serotonin, lowers cortisol, and helps you shift from fight-or-flight to rest-and-recover. Lower cortisol makes everyday stress easier to manage. We invite you to feel calmer.

The Scarf - The All-Rounder: for every day. A weighted, wearable pause button for your nervous system. The Calmr Scarf is a hug when you need one: the ultimate sensory support for stressed minds, exhausted bodies and dysregulated nervous systems. With the impact of a weighted blanket, but in a wearable form, for work, at home or for grounding yourself for yoga/Pilates.

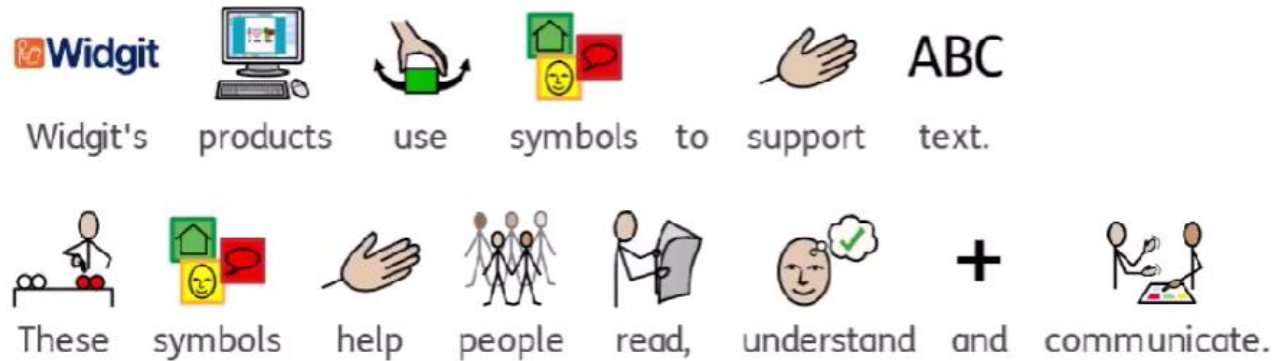
The Snood - The Perfect Commuter: on the road, in the air. A way to feel grounded and calm while you travel. The Calmr Snood is the commuter-friendly weighted wearable - for on the road, in the air. It's a lightweight, portable snood with little pockets of subtle weight for offering optimal pressure to your neck and shoulders when you're on the move. Like soothing hands on your shoulders when you need to feel grounded and come back to your body.

Assistive Products for Neurodiversity Support

Widgits are small images that accompany text to help provide context and visual support for someone who needs extra help with reading and writing. Adding Widgits to signs, interpretation, guidance and documents empowers more users to understand some or all of the messages that are being conveyed.

Widgit uses symbols to support people who have communication, language or learning disabilities. Widgit Symbols add visual support to the printed word, opening up the world of information to those otherwise excluded from it.

Widgit Symbols are used all over the world, supporting 17 languages, and increasing the accessibility of written text. The complete Widgit Symbol Set consists of more than 11,000 symbols, which provide a clear visual representation of over 40,000 words and phrases. The symbols are simply-drawn, colourful, and each illustrate a single concept in a clear and concise way.



The Widgit Symbols are used to support information and communication with people of all ages, worldwide - in education, health, public and private services.

- Symbols are permanent (spoken words disappear)
- Symbols allow time to process information
- Symbols help students grasp the nuances of language
- Symbols only include relevant information
- Symbols convey information without tone
- Symbols help build confidence and independence (help find equipment, navigate environments, follow sequences (like hand washing or teeth brushing) themselves, read and understand text, recognize what is happening next in a day / week through visual timetables, provide the means of retelling / recounting information.
- Symbols help reduce anxiety and stress

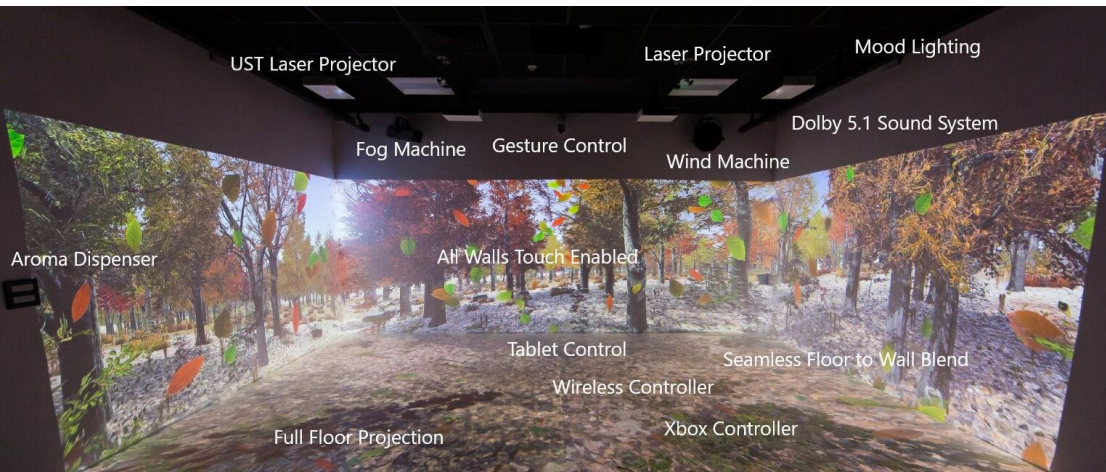
Assistive Products for Neurodiversity Support

Immersive Reality Spaces: Environments Without Limits

An Immersive Reality Space is a state-of-the-art, shared environment designed to break down the walls of the physical room. By blending high-definition visuals with sensory regulation, these spaces allow users to explore, learn, and engage with the world in a safe, controlled, and entirely inclusive setting.

Immersive technology transforms any room into a dynamic simulation, making almost any experience possible. It is the ultimate "enabling environment," tailored to support a diverse range of needs.

- **Social Interaction & Discovery:** A communal space where users can engage together, regardless of their physical or cognitive abilities.
 - **Real-Life Simulations:** Develop key life skills and overcome phobias by practicing everyday tasks in a predictable, high-fidelity environment.
 - **Therapy & Emotion Regulation:** A calm, regulated setting that supports therapeutic interventions, improves resilience, and promotes emotional well-being.
 - **Collaborative Learning:** Adaptable for individual focus or group exercises, fostering discussion and shared exploration.
- Care, Comfort, and Connection: Beyond education and therapy, Immersive Spaces serve as a sanctuary for families and a bridge for those facing isolation.
- **A Place to Play:** The perfect setting for friends and families—especially children—to interact and play in a magical, responsive atmosphere.
 - **Combatting Isolation:** For those who can no longer access certain real-world activities, our simulations bring the outside world in. Users can revisit favorite pastimes or experience new ones, significantly improving their quality of life.
 - **Stress Reduction:** The environment is engineered to be calming and therapeutic, providing a sensory-safe haven for relaxation and social engagement.



Assistive Products for Neurodiversity Support

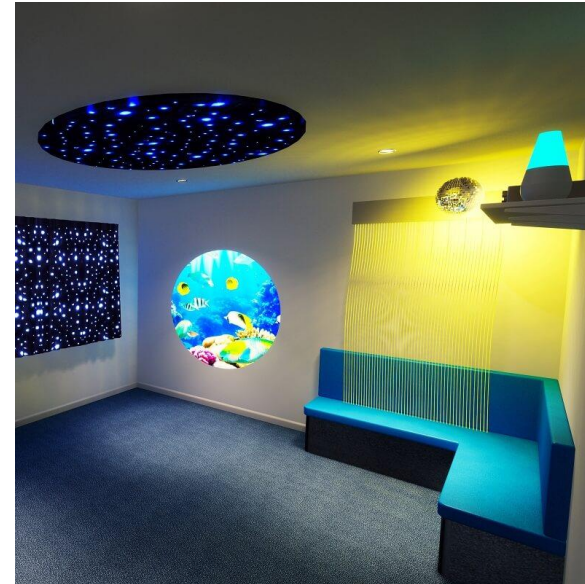
The Quiet / Sensory Rooms and Sensory Hubs

For many people, going to the airport or hospital can be a stressful and anxiety inducing experience. For children who already struggle with these issues, it can actually be quite traumatizing. One way to help reduce the stressors and help children cope with the experience is to have a sensory room or sensory hub on site. The ability to step into a room that is designed to be soothing and calming can help children process their emotions and be better able to handle the visit.

The Power of Sensory Spaces: Key Benefits

Sensory Rooms and Hubs provide a controlled, immersive environment designed to support neurodiversity and physical development. Here is how these spaces transform lives:

- **Sharpens Focus & Attention:** Specifically beneficial for individuals with ADHD, sensory equipment encourages users to concentrate on a singular activity. This builds vital "real-world" skills for staying calm and focused in distracting environments.
- **Bridges Communication Gaps:** Interactive technology encourages both verbal and non-verbal communication. For those with Autism who may be withdrawn, specialized sound-based equipment helps foster vocalization and engagement.
- **Encourages Social Interaction:** Designed for both individuals and groups, these rooms provide a safe space to practice social skills. Users learn how their actions affect others, fostering cooperation and social awareness in a stress-free setting.
- **Relieves Stress & Anxiety:** The world can be overwhelming for those with intellectual disabilities. A sensory room offers a calm, absorbing sanctuary where overactive or distressed users can self-regulate and feel secure enough to open up.
- **Enhances Balance & Motor Skills:** For those with physical challenges like Cerebral Palsy, sensory tools improve: Fine & Gross Motor Skills, essential for daily tasks; Visual Processing, aiding in navigation and coordination; Balance & Movement, building physical confidence through play.



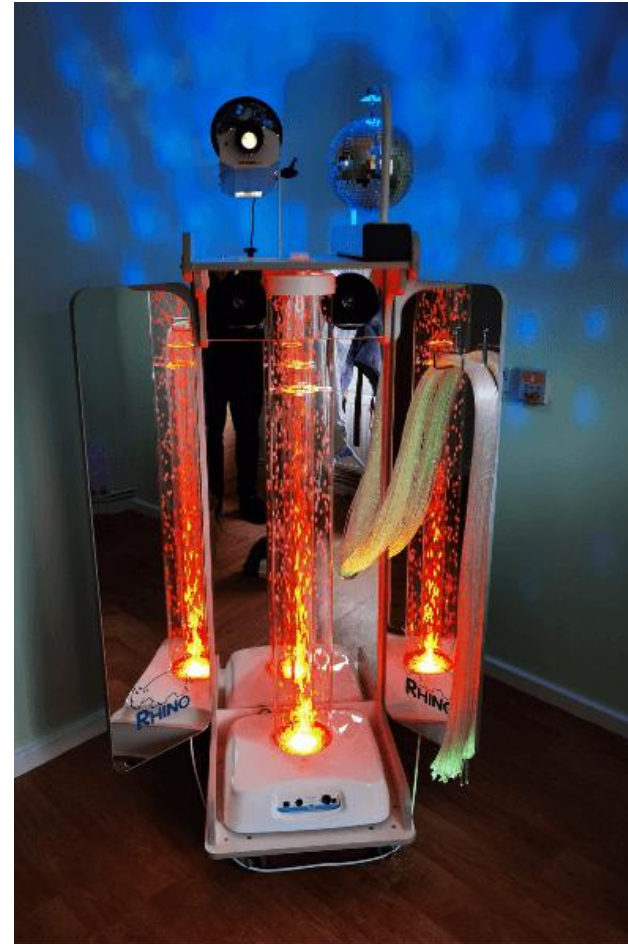
Assistive Products for Neurodiversity Support

Sensory Voyager: The Ultimate Mobile Sensory Solution

Bring the sensory room experience directly to the user. The Sensory Voyager is a compact, high-impact sensory trolley designed for environments where space is at a premium or where users cannot easily travel to a dedicated sensory room. It is the perfect blend of powerful stimulation and effortless portability.

Key Features & Benefits

- The Sensory Voyager is engineered for the demands of modern healthcare, education, and care settings, prioritizing ease of use and safety.
- Plug-and-Play Simplicity: No complex setup or specialized wiring required. The entire unit is powered by a single 13amp plug socket, allowing you to activate a world of light and sound instantly.
- Uniquely Portable: Designed with a slim profile to fit perfectly through standard doorways. Equipped with ergonomic handles and high-quality castors, it can be easily pushed along corridors by a single staff member.
- Infection Control Ready: Safety is paramount. The unit is constructed with wipe-clean surfaces specifically designed for easy sanitization, making it an ideal choice for hospitals, hospices, and care homes.
- Versatile Engagement: Despite its mobility, the Voyager delivers a full sensory experience, including fiber optics, bubble tubes, and integrated audio—perfect for bedside therapy or small-group sessions.



Assistive Products for Neurodiversity Enhancement

Safespaces

Safespaces are custom-made, robust, and padded environments designed to support individuals with complex needs, such as autism, epilepsy, or challenging behaviors. These safe, low-stimulation spaces help reduce risk and promote independence, providing a secure setting for sleeping, play, therapy, or calming down. Safespaces are used in homes, schools, and care settings across the world to enhance safety and quality of life.

Who are Safespaces for?

Safespaces are designed for adults and children who may be unsafe in an ordinary room or bed. We supply products for people with complex needs, including learning disabilities, autism, epilepsy and behaviours of concern.

What difference do our products make to the people using them and their families?

- enable children and adults to stay at home when this doesn't seem possible
- allow the user and their family to sleep, often for the first time in years
- assist individuals to manage their own behaviours or reduce medication
- provide a cosy therapy and sensory space
- allow families to go on holiday with a familiar safe bed
- in hospitals our high sided beds enable people with complex needs to access medical treatment in a safe environment
- can provide a temporary bed for respite care

Safespaces Voyager®: A safe, easily transportable travel bed



Safespaces: installed Option



Hidden Disabilities Sunflower: Making the Invisible Visible

Not all disabilities are visible. For millions of people worldwide, conditions like autism, chronic pain, dementia, anxiety, or hearing loss are not immediately apparent. The Hidden Disabilities Sunflower is a globally recognized symbol that allows individuals to discreetly signal that they may need additional support, understanding, or a little more time.

How the Program Works.

The Sunflower serves as a simple yet powerful communication tool between the wearer and the community. **Discreet Identification:** By wearing a Sunflower lanyard, pin, or wristband, a person voluntarily shares that they have a non-visible condition. **A Signal for Support:** It alerts staff in shops, transport, and public spaces to be patient, offer a helping hand, or provide extra time without the wearer needing to explain their condition. **Universal Recognition:** Used in over 90 countries and recognized by major airports, retailers, healthcare providers, and emergency services.

Benefits for Your Organization

Joining the Sunflower network transforms your facility into a more inclusive and welcoming environment. **Staff Confidence:** Training provided through the program empowers your team to identify and support Sunflower wearers effectively. **Customer Loyalty:** Demonstrating a commitment to accessibility builds deep trust and loyalty within the disability community. **Inclusive Workplace:** It fosters a culture where employees feel safe to be their whole selves, improving well-being and productivity. **Social Responsibility:** Align your brand with a global movement for equality and accessibility.





Contact Us

Topland



sales@topland.me



www.toplandpod.me



Topland